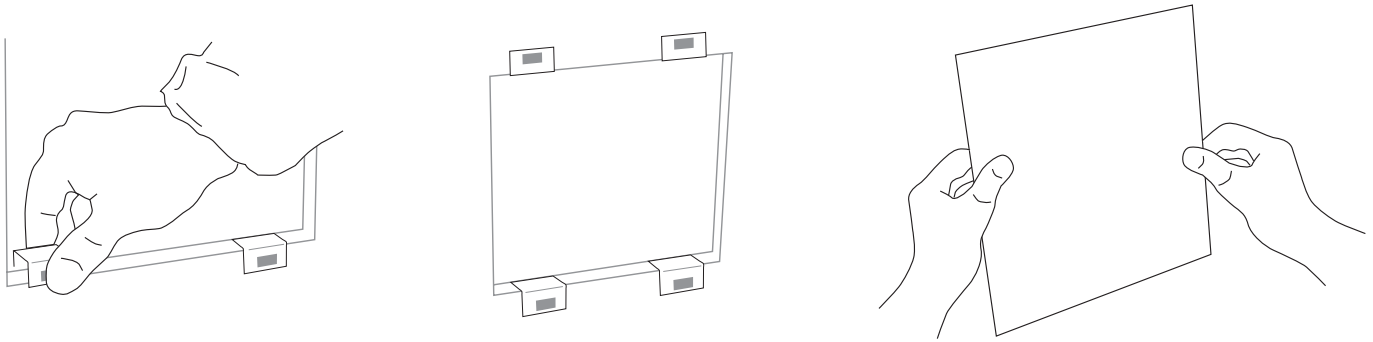


# INSPECTION HATCH – PML

## QUICK ATTACHMENT WITH MAGNETS

### INSPECTION HATCH WITH QUICK FASTENERS, NON-HINGED

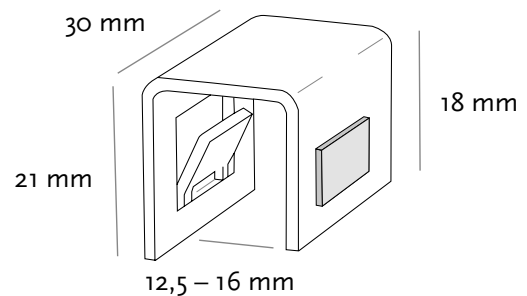
An inspection hatch that is also well-suited for tight spaces.



### INSTALLATION OPENING DIMENSIONS FOR DRYWALL STRUCTURES

- Determine the location of the hatch. Note that the installation opening should be at least 25 mm smaller on each side than the hatch.
- Cut the installation opening and position the U-fixings so that the magnets remain on the facade side.

### ADJUSTABLE STANDARD FIXING 13–16 MM



### INSTALLATION OF STANDARD FIXINGS

- The adjustable fixings included in the package are designed for 13–16 mm plasterboard, furniture board, and paneling.
- Place the fixings evenly spaced on each side of the installation opening.
- For thicker plasterboard, use a hammer to install the fixings.

### ADJUSTMENT AND INSPECTION

- Tighten any loose fixings if needed. In thin structures, the fixings can also be tightened with wedges.
- Ensure that the surface of the drywall (e.g., spray plaster) does not extend higher than the magnet.
- Attach the hanging wire loop between the U-fixing and the structure. Finally, attach the hatch cover to the hanging wire loop.

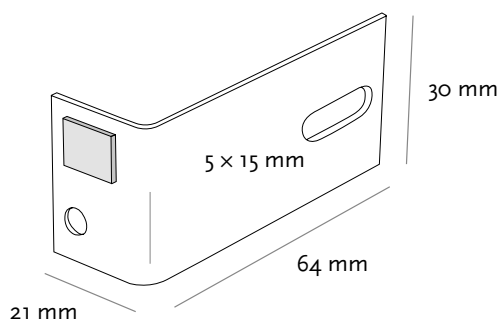
Nimike	Ulkomitta mm	Aukko mm	Kiinnikeitä kappaletta
PML1515	150×150	100×100	4
PML2020	200×200	150×150	4
PML2525	250×250	200×200	4
PML2535*	250×350	200×300	4
PML2550*	250×500	200×450	4
PML3030	300×300	250×250	4
PML3535	350×350	300×300	6
PML3545*	350×450	300×400	8
PML3555*	350×550	300×500	8
PML3565*	350×650	300×600	10
PML4040	400×400	350×350	8
PML4545	450×450	400×400	8
PML4565*	450×650	400×600	12
PML5050	500×500	450×450	10
PML5555	550×550	500×500	12
PML6060	600×600	550×550	16
PML6565	650×650	600×600	16
PML7070*	700×700	650×650	20



# SPECIAL FIXINGS

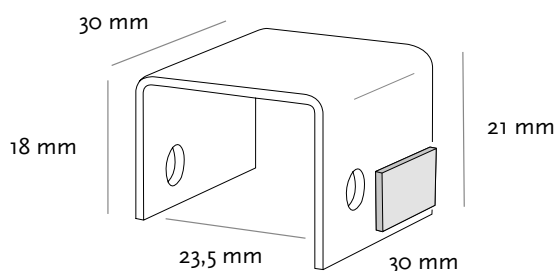
ADDITIONAL AND SPECIAL FIXINGS FOR THE MAGNETIC HATCH

AVAILABLE ON REQUEST | CONTACT OUR SALES FOR MORE INFORMATION



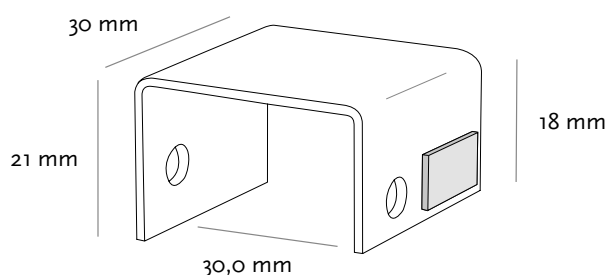
## L-FIXING

- For thick structures, such as concrete, stone blocks, etc.
- For wood or metal studs



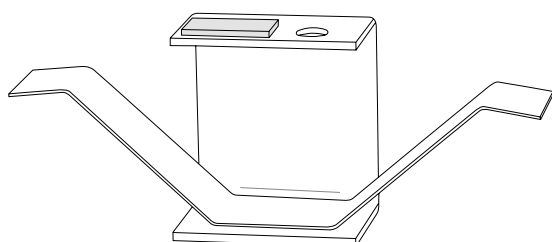
## U-FIXING 24 MM

- For double plasterboard or plasterboard + plywood structures, or similar



## U-FIXING 30 MM

- For exceptionally thick materials
- For structures with multiple surface materials



## SPRING FIXING

- For openings where the structure thickness varies between 8–24 mm, or the surface material is uneven
- Used together with U24 or U30 fixings

