

# INSPECTION HATCH

Installation and User Instructions, models: PTLdB | EI30PTL | EI60PTL

**PTLdB** Sound insulated inspection hatch for wall or ceiling installation

**EI30PTL** Fire-resistant hatch (EI30) for wall or ceiling installation

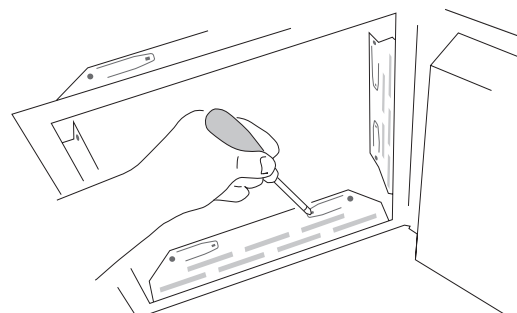
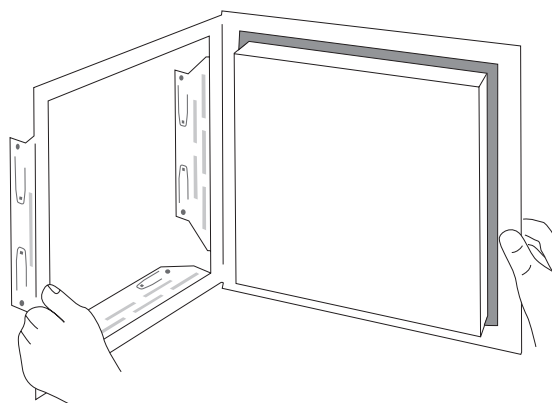
**EI60PTL** Fire-resistant hatch (EI60) for wall installation only



## QUICK FASTENING MECHANISM FOR WALL OR CEILING (THICKNESS 15–30 MM)

The quick fastening mechanism is designed for double board structures. The frame also includes holes for screw or nail mounting.

1. Mark the position of the inspection hatch and carefully check diagonal measurements. Cut the opening to the correct dimensions.
2. Open the hatch and place the frame into the opening. Pay attention to the weight of the door, especially for ceiling installations – support the door to prevent uncontrolled opening.
3. Ensure the frame fits tightly against the board surface. Push all quick fasteners behind the board using, for example, a screwdriver. The more the fasteners are turned, the tighter they grip.
4. Finally, close and lock the hatch cover, and make sure the frame is tight against the surface.



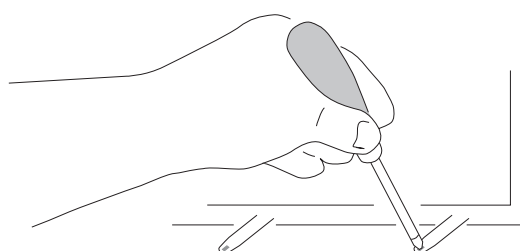
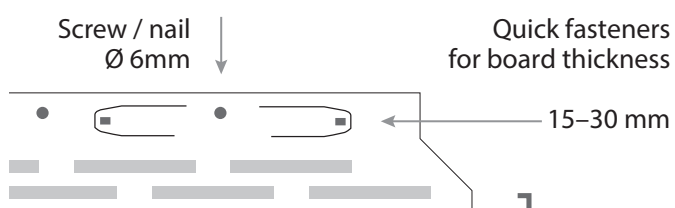
## ALTERNATIVE INSTALLATION – SCREWS OR NAILS

Attach the panel through all mounting holes (Ø 6.0 mm) using suitable nails or screws.

- For metal or wooden frames: screws min. 4.5×35 mm
- For lightweight concrete or block walls: nails min. 2.9×65 mm

## DIMENSIONS

- Installation opening = nominal hatch size
- Outer cover size = nominal size + 35 mm
- Frame depth = 42 mm from board surface



## SOUND INSULATED INSPECTION HATCH – PTLDB

The PTLdB model is a sound insulated inspection hatch designed for indoor use. It can be installed in both vertical and horizontal structures (e.g., walls and ceilings)..

Always install the hatch according to these instructions. Do not modify the hatch structure or remove any seals or insulation materials.



### WHEN INSTALLING THE HATCH, CONSIDER:

- The size and location of the hatch in the building
- The required level of sound insulation

### SAFETY AND MAINTENANCE

- Do not install a damaged hatch. A damaged hatch must be replaced.
- Always support the hatch when opening to prevent uncontrolled movement. The door weight may be significant, especially in ceiling installations.
- The hatch must always remain closed and locked using e.g. 7 mm triangular lock when not in use.

### DOCUMENTATION AND INSTRUCTIONS

- Installation instructions are delivered with the product.
- Include the installation instructions and all relevant product information in the project documentation (e.g., building manual) so they are easy to locate later.

### SOUND INSULATION – PTLDB

The sound insulation performance of the inspection hatches has been tested and classified according to ISO 717-1:1996:

| Model     | Size<br>mm | Sound insulation<br>Dn,e,w |
|-----------|------------|----------------------------|
| PTL2020dB | 200 × 200  | 47 dB                      |
| PTL6060dB | 600 × 600  | 43 dB                      |

The complete sound insulation test reports are available at: [www.kiilax.fi](http://www.kiilax.fi).

### ADDITIONAL INFORMATION

Regulations regarding noise control and indoor sound environments:

- Ministry of the Environment Decree on the Acoustic Environment of Buildings 796/2017 | [www.finlex.fi](http://www.finlex.fi)
- Contact the local building authority for more information, if necessary.

### CONTACT INFORMATION

For all product-related inquiries, please contact the manufacturer, Kiilax Oy:

- [info@kiilax.fi](mailto:info@kiilax.fi)
- [www.kiilax.fi/en/](http://www.kiilax.fi/en/)

